



**REGIONAL SPECIALISED METEOROLOGICAL CENTRE-TROPICAL CYCLONES, NEW DELHI  
TROPICAL WEATHER OUTLOOK**

**DEMS-RSMC SPECIAL TROPICAL CYCLONES NEW DELHI DATED 18.12.2022**

**TROPICAL WEATHER OUTLOOK FOR NORTH INDIAN OCEAN (THE BAY OF BENGAL AND THE ARABIAN SEA) VALID FOR NEXT 120 HOURS ISSUED AT 0600 UTC OF 18.12.2022 BASED ON 0300 UTC OF 18.12.2022.**

**BAY OF BENGAL:**

YESTERDAY'S LOW PRESSURE AREA OVER SOUTHEAST BAY OF BENGAL & ADJOINING EAST EQUATORIAL INDIAN OCEAN LAY OVER CENTRAL PARTS OF SOUTH BAY OF BENGAL & ADJOINING EAST EQUATORIAL INDIAN OCEAN AT 0300 UTC OF TODAY THE 18<sup>TH</sup> DECEMBER. IT IS LIKELY TO MOVE WEST-NORTHWESTWARDS SLOWLY TOWARDS SRI-LANKA COAST DURING NEXT 3 DAYS.

AS PER SATELLITE IMAGERY CLOUDS ASSOCIATED WITH LOW PRESSURE AREA ARE SCATTERED TO BROKEN LOW AND MEDIUM CLOUDS WITH EMBEDDED INTENSE TO VERY INTENSE CONVECTION LAY OVER SOUTHCENTRAL BAY OF BENGAL ADJOINING EQUATORIAL INDIAN OCEAN BETWEEN LAT 3.0N TO 10.0N AND LONG 83.0E TO 88.0E. MINIMUM CLOUD TOP TEMPERATURE (CTT) MINUS 93<sup>0</sup>C.

SCATTERED TO BROKEN LOW AND MEDIUM CLOUDS WITH EMBEDDED INTENSE TO VERY INTENSE CONVECTION LAY OVER SOUTH BAY OF BENGAL AND SOUTHEAST ANDAMAN SEA. SCATTERED LOW AND MEDIUM CLOUDS WITH EMBEDDED ISOLATED WEAK TO MODERATE CONVECTION LAY OVER CENTRAL BAY OF BENGAL AND NORTH ANDAMAN SEA.

**PROBABILITY OF CYCLOGENESIS (FORMATION OF DEPRESSION) DURING NEXT 120 HRS:**

24 HOURS	24-48 HOURS	48-72 HOURS	72-96 HOURS	96-120 HOURS
NIL	NIL	NIL	NIL	NIL

**ARABIAN SEA:**

YESTERDAY'S WML OVER WESTCENTRAL ARABIAN SEA PERSISTED OVER THE SAME REGION AT 0300 UTC OF TODAY THE 18<sup>TH</sup> DECEMBER. IT IS VERY LIKELY TO MOVE WEST-SOUTHWESTWARDS AND WEAKEN SLOWLY OVER THE SAME REGION.

AS PER SATELLITE IMAGERY CLOUDS ASSOCIATED WITH WML ARE SCATTERED TO BROKEN LOW AND MEDIUM CLOUDS WITH EMBEDDED INTENSE TO VERY INTENSE CONVECTION LAY OVER CENTRAL PARTS OF CENTRAL ARABIAN SEA. MINIMUM CTT MINUS 93<sup>0</sup>C.

SCATTERED TO BROKEN LOW AND MEDIUM CLOUDS WITH EMBEDDED INTENSE TO VERY INTENSE CONVECTION LAY OVER CENTRAL PARTS OF WESTCENTRAL ARABIAN SEA. SCATTERED LOW AND MEDIUM CLOUDS WITH EMBEDDED WEAK TO MODERATE CONVECTION LAY OVER REST OF CENTRAL ARABIAN SEA AND COMORIN AREA.

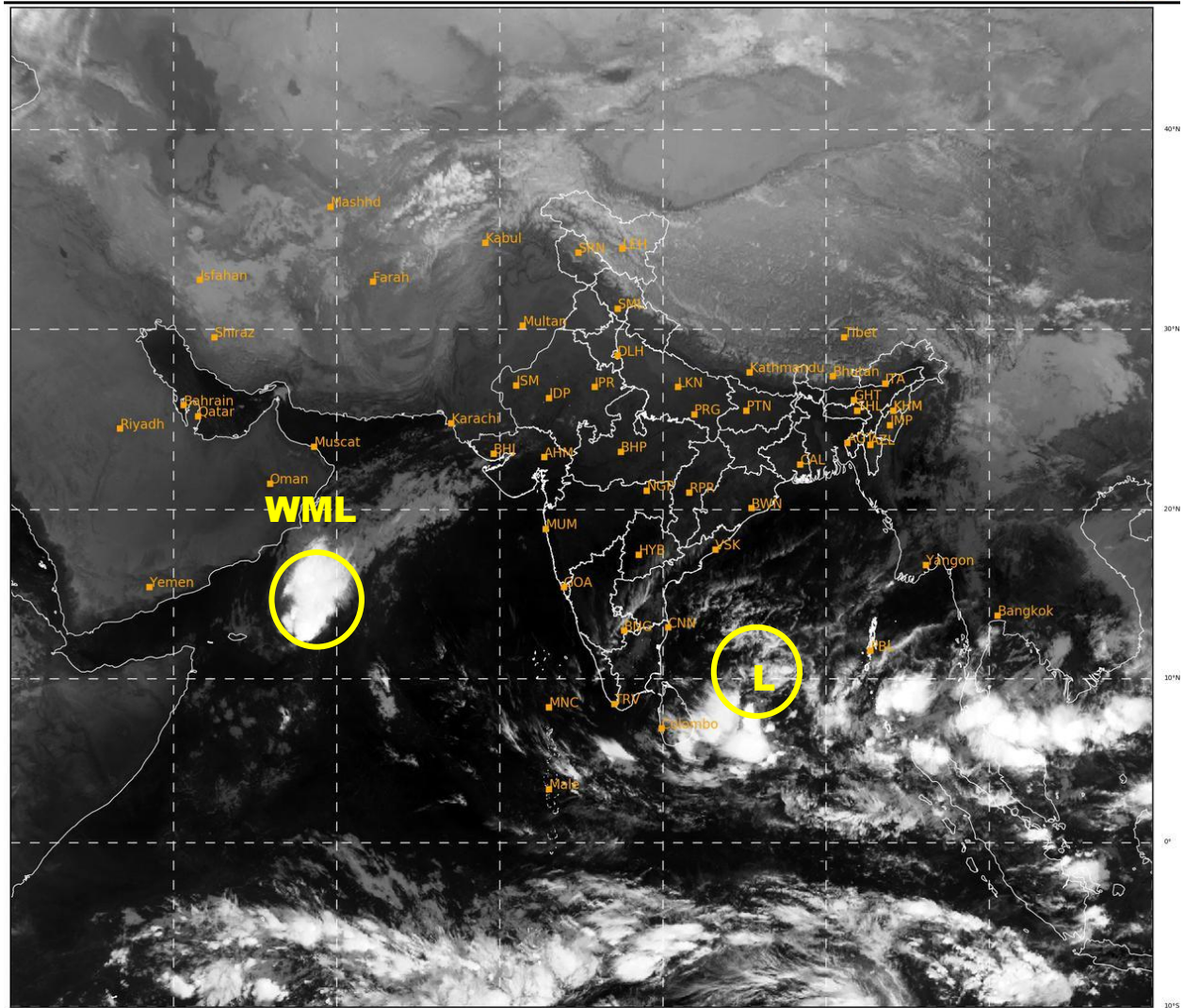
**PROBABILITY OF CYCLOGENESIS (FORMATION OF DEPRESSION) DURING NEXT 120 HRS:**

24 HOURS	24-48 HOURS	48-72 HOURS	72-96 HOURS	96-120 HOURS
NIL	NIL	NIL	NIL	NIL

**Remarks:**

SAT : INSAT-3D IMG  
 IMG\_TIR1 10.8 um  
 LIC Mercator

18-12-2022/(0330 to 0357) GMT  
 18-12-2022/(0900 to 0927) IST



518

931

IMD, DELHI

**WML- WELL MARKED LOW PRESSURE AREA**

**L- LOW PRESSURE AREA**

Cloud distribution: (a) Isolated: <25%, Scattered:25-50%, Broken: 51-75%, Solid:>75%, Convection Intensity: (a) Weak: Cloud Top Temperature (CTT) >-25°C, (b) Moderate: CTT: - 25°C to -40°C, (c) Intense: CTT: - 41°C to -70°C and (d) Very Intense: : Less than -70°C  
**PROBABILITY OF CYCLOGENESIS (FORMATION OF DEPRESSION):** NIL: 0%, LOW: 1-33%, , MODERATE: 34-66% AND HIGH: 67-100%  
 This is a guidance Bulletin for WMO/ESCAP Panel Member countries. Visit respective National websites for Country specific Bulletins